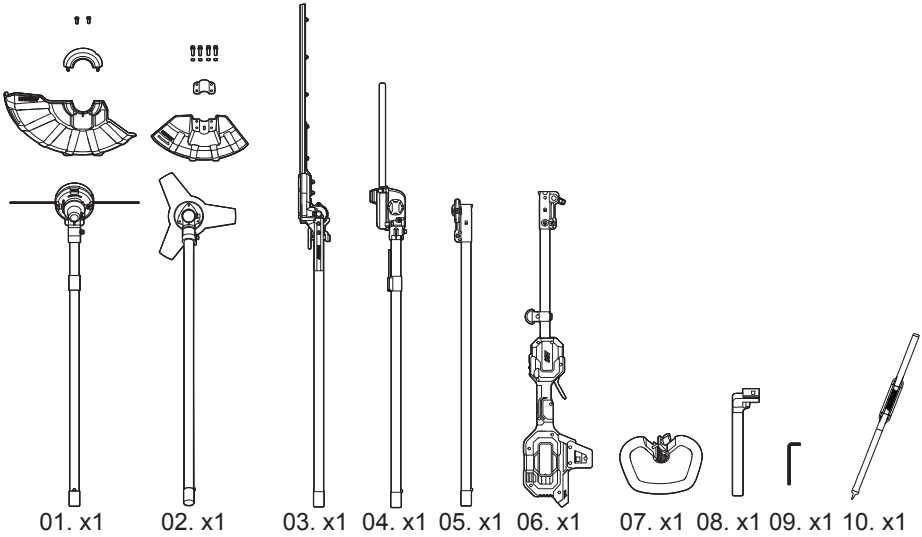


EN ORIGINAL INSTRUCTIONS

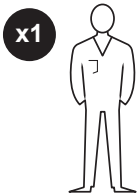
IMPORTANT - These instructions are for your safety.
Please read through them thoroughly prior to handling
the product and retain them for future reference.



EN Parts



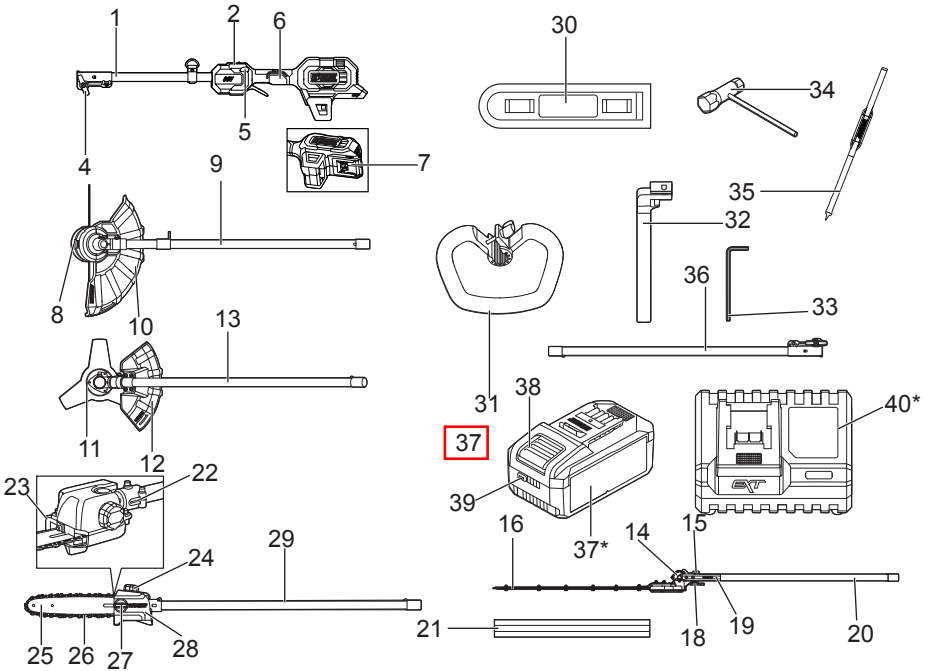
EN You will need



EN Contents

EN	
Product description	3
Safety	4
Technical specification	17
Before you start	18
Functions & Settings	23
Operation	25
Care and maintenance	28
Guarantee	32
Declaration of conformity	34

EN Product Description



- | | | | |
|----|--------------------------------|-----|-------------------------------|
| 1 | Coupler | 22 | Chain-tensioning screw |
| 2 | Speed Mode Switch | 23 | Oil tank |
| 3 | Rear Handle | 24 | Oil-tank cap |
| 4 | Wing Knob | 25 | Guide bar |
| 5 | Lock-off Button | 26 | Saw chain |
| 6 | Variable Speed Trigger | 27 | Side-cover knob |
| 7 | battery docking port | 28 | Side cover |
| 8 | Trimmer head | 29 | Pole saw Attachment shaft |
| 9 | Grass trimmer attachment shaft | 30 | Chain sheath |
| 10 | Trimmer Guard | 31 | Front-Assist Handle |
| 11 | Brush Cutter Blade | 32 | Barrier |
| 12 | Blade guard | 33 | Hex key (4mm) |
| 13 | Brush cutter attachment shaft | 34 | Multi-function wrench |
| 14 | Locking notches | 35 | Shoulder strap |
| 15 | Locking lever 2 | 36 | Extension pole |
| 16 | Hedge trimmer Blade | 37* | Battery pack |
| 17 | Cutting head | 38 | Battery pack release button |
| 18 | Locking lever 1 | 39 | Battery pack power bar button |
| 19 | Angle adjustment handle | 40* | Charger |
| 20 | Hedge Trimmer attachment shaft | 41 | Handle/Grasping surface |
| 21 | Blade sheath | | |

NOTE: * This may not be included in the supply scope.



General power machine safety warnings



WARNING! Read all safety warnings, instructions, illustrations and specifications provided with this machine. *Failure to follow all instructions listed below may result in electric shock, fire and/or serious injury.*

Save all warnings and instructions for future reference

The term “machine” in the warnings refers to your mains-operated (corded) machine or battery-operated (cordless) machine.

Work area safety

- a) **Keep work area clean and well lit.** *Cluttered or dark areas invite accidents.*
- b) **Do not operate machines in explosive atmospheres, such as in the presence of flammable liquids, gases or dust.** *Machines create sparks which may ignite the dust or fumes.*
- c) **Keep children and bystanders away while operating a machine.** *Distractions can cause you to lose control.*

Electrical safety

- a) **Machine plugs must match the outlet. Never modify the plug in any way. Do not use any adapter plugs with earthed (grounded) machines.** *Unmodified plugs and matching outlets will reduce risk of electric shock.*
- b) **Avoid body contact with earthed or grounded surfaces such as pipes, radiators, ranges and**

refrigerators. *There is an increased risk of electric shock if your body is earthed or grounded.*

- c) **Do not expose machines to rain or wet conditions.** *Water entering a machine will increase the risk of electric shock.*
- d) **Do not abuse the cord. Never use the cord for carrying, pulling or unplugging the machine. Keep cord away from heat, oil, sharp edges or moving parts.** *Damaged or entangled cords increase the risk of electric shock.*
- e) **When operating a machine outdoors, use an extension cord suitable for outdoor use.** *Use of a cord suitable for outdoor use reduces the risk of electric shock.*
- f) **If operating a machine in a damp location is unavoidable, use a residual current device (RCD) protected supply.** *Use of an RCD reduces the risk of electric shock.*

Personal safety

- a) **Stay alert, watch what you are doing and use common sense when operating a machine. Do not use a machine while you are tired or under the influence of drugs, alcohol or medication.** *A moment of inattention while operating machines may result in serious personal injury.*
- b) **Use personal protective equipment. Always wear eye protection.** *Protective equipment such as a dust mask, non-skid safety shoes, hard hat, or hearing protection used for appropriate conditions will reduce personal injuries.*

- c) **Prevent unintentional starting. Ensure the switch is in the off-position before connecting to power source and/or battery pack, picking up or carrying the machine.** *Carrying machines with your finger on the switch or energising machines that have the switch on invites accidents.*
- d) **Remove any adjusting key or wrench before turning the machine on.** *A wrench or a key left attached to a rotating part of the machine may result in personal injury.*
- e) **Do not overreach. Keep proper footing and balance at all times.** *This enables better control of the machine in unexpected situations.*
- f) **Dress properly. Do not wear loose clothing or jewellery. Keep your hair and clothing away from moving parts.** *Loose clothes, jewellery or long hair can be caught in moving parts.*
- g) **If devices are provided for the connection of dust extraction and collection facilities, ensure these are connected and properly used.** *Use of dust collection can reduce dust-related hazards.*
- h) **Do not let familiarity gained from frequent use of machines allow you to become complacent and ignore machine safety principles.** *A careless action can cause severe injury within a fraction of a second.*

Machine use and care

- a) **Do not force the machine. Use the correct machine for your application.** *The correct machine will do the job better and safer at the rate for which it was designed.*
- b) **Do not use the machine if the switch does not turn it**

on and off. *Any machine that cannot be controlled with the switch is dangerous and must be repaired.*

- c) **Disconnect the plug from the power source and/ or remove the battery pack, if detachable, from the machine before making any adjustments, changing accessories, or storing machines.** *Such preventive safety measures reduce the risk of starting the machine accidentally.*
- d) **Store idle machines out of the reach of children and do not allow persons unfamiliar with the machine or these instructions to operate the machine.** *Machines are dangerous in the hands of untrained users.*
- e) **Maintain machines and accessories. Check for misalignment or binding of moving parts, breakage of parts and any other condition that may affect the machine's operation. If damaged, have the machine repaired before use.** *Many accidents are caused by poorly maintained machines.*
- f) **Keep cutting tools sharp and clean.** *Properly maintained cutting tools with sharp cutting edges are less likely to bind and are easier to control.*
- g) **Use the machine, accessories and tool bits etc., in accordance with these instructions, taking into account the working conditions and the work to be performed.** *Use of the machine for operations different from those intended could result in a hazardous situation.*
- h) **Keep handles and grasping surfaces dry, clean and free from oil and grease.** *Slippery handles and grasping surfaces do not allow for safe handling and control of the machine in unexpected situations.*

Battery machine use and care

- a) **Recharge only with the charger specified by the manufacturer.** *A charger that is suitable for one type of battery pack may create a risk of fire when used with another battery pack.*
- b) **Use machines only with specifically designated battery packs.** *Use of any other battery packs may create a risk of injury and fire.*
- c) **When battery pack is not in use, keep it away from other metal objects, like paper clips, coins, keys, nails, screws, or other small metal objects, that can make a connection from one terminal to another.** *Shorting the battery terminals together may cause burns or a fire.*
- d) **Under abusive conditions, liquid may be ejected from the battery; avoid contact. If contact accidentally occurs, flush with water. If liquid contacts eyes, additionally seek medical help.** *Liquid ejected from the battery may cause irritation or burns.*
- e) **Do not use a battery pack or machine that is damaged or modified.** *Damaged or modified batteries may exhibit unpredictable behaviour resulting in fire, explosion or risk of injury.*
- f) **Do not expose a battery pack or machine to fire or excessive temperature.** *Exposure to fire or temperature above 130°C may cause explosion.*
- g) **Follow all charging instructions and do not charge the battery pack or machine outside the temperature range specified in the instructions.** *Charging*

improperly or at temperatures outside the specified range may damage the battery and increase the risk of fire.

Service

- a) **Have your machine serviced by a qualified repair person using only identical replacement parts.** *This will ensure that the safety of the machine is maintained.*
- b) **Never service damaged battery packs.** *Service of battery packs should only be performed by the manufacturer or authorized service providers.*

Grass trimmer and brush cutter safety warnings

- a) **Do not use the machine in bad weather conditions, especially when there is a risk of lightning.** *This decreases the risk of being struck by lightning.*
- b) **Thoroughly inspect the area for wildlife where the machine is to be used.** *Wildlife may be injured by the machine during operation.*
- c) **Thoroughly inspect the area where the machine is to be used and remove all stones, sticks, wires, bones, and other foreign objects.** *Thrown objects can cause personal injury.*
- d) **Before using the machine, always visually inspect to see that the cutter or blade and the cutter or blade assembly are not damaged.** *Damaged parts increase the risk of injury.*
- e) **Follow instructions for changing accessories.** *Improperly tightened blade securing nuts or bolts may either damage the blade or result in it becoming detached.*

- f) **The rated rotational speed of the blade must be at least equal to the maximum rotational speed marked on the machine.** *Blades running faster than their rated rotational speed can break and fly apart.*
- g) **Wear eye, ear, head and hand protection.** *Adequate protective equipment will reduce personal injury by flying debris or accidental contact with the cutting line or blade.*
- h) **While operating the machine, always wear safety footwear. Do not operate the machine when barefoot or wearing open sandals.** *This reduces the chance of injury to the feet from contact with a moving cutter, line or blade.*
- i) **While operating the machine, always wear long trousers.** *Exposed skin increases the likelihood of injury from thrown objects.*
- j) **Keep bystanders away while operating the machine.** *Thrown debris can result in serious personal injury.*
- k) **Always use two hands when operating the machine.** *Holding the machine with both hands will avoid loss of control.*
- l) **Hold the machine by the insulated gripping surfaces only, because the cutting line or blade may contact hidden wiring.** *Cutting line or blades contacting a “live” wire may make exposed metal parts of the machine “live” and could give the operator an electric shock*
- m) **Always keep proper footing and operate the machine only when standing on the ground.** *Slippery or unstable surfaces may cause a loss of balance or control of the machine.*

- n) **Do not operate the machine on excessively steep slopes.** *This reduces the risk of loss of control, slipping and falling which may result in personal injury.*
- o) **When working on slopes, always be sure of your footing, always work across the face of slopes, never up or down and exercise extreme caution when changing direction.** *This reduces the risk of loss of control, slipping and falling which may result in personal injury.*
- p) **Keep all parts of the body away from the cutter, line or blade when the machine is operating. Before you start the machine, make sure the cutter, line or blade is not contacting anything.** *A moment of inattention while operating the machine may result in injury to yourself or others.*
- q) **Do not operate the machine above waist height.** *This helps prevent unintended cutter or blade contact and enables better control of the machine in unexpected situations.*
- r) **When cutting brush or saplings that are under tension, be alert for spring back.** *When the tension in the wood fibers is released, the brush or sapling may strike the operator and/or throw the machine out of control.*
- s) **Use extreme caution when cutting brush and saplings.** *The slender material may catch the blade and be whipped toward you or pull you off balance.*
- t) **Maintain control of the machine and do not touch cutters, lines or blades and other hazardous moving parts while they are still in motion.** *This reduces the risk of injury from moving parts.*

- u) **Carry the machine with the machine switched off and away from your body.** *Proper handling of the machine will reduce the likelihood of accidental contact with a moving cutter, line or blade*
- v) **When transporting or storing the machine, always fit the cover on metal blades.** *Proper handling of the machine will reduce the likelihood of accidental contact with the blade.*
- w) **Only use replacement cutters, lines, cutting heads and blades specified by the manufacturer.** *Incorrect replacement parts may increase the risk of breakage and injury.*
- x) **When clearing jammed material or servicing the machine, make sure the switch is off and the battery pack is removed.** *Unexpected starting of the machine while clearing jammed material or servicing may result in serious personal injury.*

Blade thrust causes and related warnings

Blade thrust is a sudden sideways, forward or backward motion of the machine, which may occur when the blade jams or catches on an object such as a sapling or a tree stump. It can be violent enough to cause the machine and/or operator to be propelled in any direction, and possibly lose control of the machine.

Blade thrust and its related hazards can be avoided by taking proper precautions as given below.

- a) **Maintain a firm grip with both hands on the machine and position your arms to resist blade thrust.**
Position your body to the left side of the machine.

Blade thrust can increase the risk of injury due to the machine moving unexpectedly. Blade thrust can be controlled by the operator if proper precautions are taken.

- b) If the blade binds, or when interrupting a cut for any reason, switch the machine off and hold the machine motionless in the material until the blade comes to a complete stop. While the blade is binding, never attempt to remove the machine from the material or pull the machine backward while the blade is in motion, otherwise blade thrust may occur. Investigate and take corrective actions to eliminate the cause of blade binding.**
- c) Do not use blunt or damaged blades. Blunt or damaged blades increase the risk of jamming or catching on an object, resulting in blade thrust.**
- d) Always maintain good visibility of the material being cut. Blade thrust is more likely to occur in areas where it is difficult to see the material being cut.**
- e) If you are approached by another person while operating the machine, switch the machine off. There is an increased risk of injury to other persons being struck by the moving blade in the event of blade thrust.**

Hedge trimmer safety warnings

- a) Do not use the hedge trimmer in bad weather conditions, especially when there is a risk of lightning. This decreases the risk of being struck by lightning.**

- b) **Keep all power cords and cables away from cutting area.** *Power cords or cables may be hidden in hedges or bushes and can be accidentally cut by the blade.*
- c) **Wear ear protection.** *Adequate protective equipment will reduce the risk of hearing loss.*
- d) **Hold the hedge trimmer by insulated gripping surfaces only, because the blade may contact hidden wiring.** *Blades contacting a “live” wire may make exposed metal parts of the hedge trimmer “live” and could give the operator an electric shock.*
- e) **Keep all parts of the body away from the blade. Do not remove cut material or hold material to be cut when blades are moving.** *Blades continue to move after the switch is turned off. A moment of inattention while operating the hedge trimmer may result in serious personal injury.*
- f) **When clearing jammed material or servicing the hedge trimmer, make sure all power switches are off and the battery pack is removed or disconnected.** *Unexpected actuation of the hedge trimmer while clearing jammed material or servicing may result in serious personal injury.*
- g) **Carry the hedge trimmer by the handle with the blade stopped and taking care not to operate any power switch.** *Proper carrying of the hedge trimmer will decrease the risk of inadvertent starting and resultant personal injury from the blades.*
- h) **When transporting or storing the hedge trimmer, always use the blade cover.** *Proper handling of the hedge trimmer will decrease the risk of personal injury from the blades.*

Additional safety instructions for pole hedge trimmers

Pole hedge trimmer safety warnings:

- a) **Always use head protection when operating the pole hedge trimmer overhead.** *Falling debris can result in serious personal injury.*
- b) **Always use two hands when operating the pole hedge trimmer.** *Hold the pole hedge trimmer with both hands to avoid loss of control.*
- c) **To reduce the risk of electrocution, never use the pole hedge trimmer near any electrical power lines.** *Contact with or use near power lines may cause serious injury or electric shock resulting in death.*

Pole saw safety warnings

- a) **Keep all parts of the body away from the saw chain. Do not remove cut material nor hold material to be cut when saw chain is moving. Make sure the machine is switched off and the battery is removed when clearing jammed material.** *A moment of inattention while operating the pole saw may result in serious personal injury.*
- b) **Hold the machine by insulated gripping surfaces only, because the saw chain may contact hidden wiring.** *Saw chains contacting a “live” wire may make exposed metal parts of the machine “live” and could give the operator an electric shock.*
- c) **Maintain a firm grip, with both hands on the pole saw and position your body and arm to allow you to resist any kickback forces.** *Kickback forces can be controlled*

by the operator, if proper precautions are taken. Do not let go of the pole saw.

- d) **When cutting a branch be alert for kickback.** *When the branch is broached it can bend down and jam the saw chain.*
- e) **Carry the pole saw switched off, always with both hands and the saw chain with bar cover fitted, away from you.** *Proper handling of the pole saw will reduce the likelihood of accidental contact with the moving saw chain.*
- f) **Do not operate a pole saw in a tree.** *Operation of a pole saw while climbing or situated in a tree may result in personal injury.*
- g) **Always keep proper footing and operate the pole saw only, when standing on fixed, secure and ground level surface.** *Slippery or unstable surfaces such as ladders may cause a loss of balance or control of the pole saw.*
- h) **Follow instructions for oiling, chain tensioning and changing accessories.** *Improperly tensioned or lubricated chain may either break or increase the chance for kickback.*
- i) **Keep handles dry, clean, and free from oil and grease.** *Greasy, oily handles are slippery causing loss of control.*
- j) **Cut wood only. Don't use pole saw for purposes not intended. For example: do not use pole saw for cutting plastic, masonry or non-wood building materials.** *Use of the pole saw for operations different than intended could result in a hazardous situation.*

k) **Causes and operator prevention of kickback:**

Kickback may occur when the nose or tip of the guide bar touches an object, or when the wood closes in and pinches the saw chain in the cut.

Tip contact in some cases may cause a sudden reverse reaction, kicking the guide bar up and back towards the operator.

Pinching the saw chain along the top of the guide bar may push the guide bar rapidly back towards the operator.

Either of these reactions may cause you to lose control of the pole saw which could result in serious personal injury. As a pole saw user, you should take several steps to keep your cutting jobs free from accident or injury. Kickback is the result of machine misuse and/ or incorrect operating procedures or conditions and can be avoided by taking proper precautions as given below:

- **When cutting a branch be alert for kickback.** When the branch is broached it can bend down and jam the saw chain.
- **Only use replacement saw chains and bars specified by the manufacturer.** Incorrect replacement of saw chains and bars may cause chain breakage and/ or kickback.
- **Always wait until the machine has come to a complete stop, and remove the battery before placing it down.** The saw chain can jam or kickback and lead to loss of control over the garden machine.
- Switch off the pole saw when changing the working position.

Some regions have regulations that restrict the use of the product. Check with your local authority for advice.

Additional safety warnings for multi tool.

- a) **Damage to Trimmer** - *If you strike a foreign object with the trimmer or it becomes entangled, stop the machine immediately, check for damage and have any damage repaired before further operation is attempted. Do not operate with a broken guard or spool.*
- b) **If the equipment should start to vibrate abnormally, stop the motor and check immediately for the cause.** *Vibration is generally a warning of trouble. A loose head may vibrate, crack, break or come off the trimmer, which may result in serious or fatal injury. Make sure that the cutting attachment is properly fixed in position. If the head loosens after fixing it in position, replace it immediately. Never use a trimmer with a loose cutting attachment.*
- c) Advice to check the hedges and bushes for foreign objects, e.g. wire fences and hidden wiring.
- d) Advice to have any adjustable stopping mechanism maintained at regular intervals.
- e) The cutting accessory guard and handle adjustments should be made with the motor stopped and battery removed.
- f) Advice to inspect machine for damage upon striking a hard object or if there appears to excessive vibration.
- g) Keep hands away from any sharp device intended to limit the length of the filament line.
- h) Once encountered blockage of the cutting accessory or cutting head, stop the motor and removed battery,

inspect the cutting accessory or cutting head and clean all the foreign objects which cause blockage. This blockage situation may cause overheating of the motor.

- i) Need daily inspection before use and after dropping or other impacts to identify any significant defects.
- j) Follow the corresponding figures for correct working posture, need rest and changing working positions regularly.
- k) Advice to keep firm footing and balance during operation, including the need to use the harness provided.

Additional safety warnings for battery pack

- a) **Battery pack needs to be charged before use.** *Always refer to the charger's instruction and charge it properly.*
- b) **Remove the battery pack from the product when not in use.**
- c) **Don't maintain the battery pack on the charger when not in use.**
- d) **After extended periods of storage, it may be necessary to charge and discharge the battery pack several times to obtain the maximum performance.**
- e) **Longer life and better performance can be obtained if the battery is charged when the air temperature is between 18°C and 24°C.** *Do not charge the battery in air temperature below 5°C or above 40°C. This is important as it can prevent serious damage to the battery.*
- f) **Do not charge battery in a damp or wet location.** *Following this rule will reduce the risk of electric shock.*
- g) **Do not disassemble the battery and avoid mechanical damage to the battery. Risk of short circuit and**

fumes may be emitted. *Ensure fresh air and seek medical assistance in the event of discomfort.*

h) When disposing of battery pack, keep the battery pack of different electrochemical systems separate from each other.

Vibration and noise reduction

To reduce the impact of noise and vibration emission, limit the time of operation, use low-vibration and low-noise operating modes as well as wear personal protective equipment.

Take the following points into account to minimize the vibration and noise exposure risks:

1. Only use the product as intended by its design and these instructions.
2. Ensure that the product is in good condition and well maintained.
3. Use correct application tools for the product and ensure they in good condition.
4. Keep tight grip on the handles/grip surface.
5. Maintain this product in accordance with these instructions and keep it well lubricated (where appropriate).
6. Plan your work schedule to spread any high vibration tool use across a longer period of time.

The European Physical Agents (Vibration) Directive has been brought in to help reduce hand arm vibration syndrome injuries to users of products with vibration emission. The directive requires manufacturers and suppliers to provide

indicative vibration test results to enable users to make informed decisions as to the period of time a product can be used safely on a daily basis and the choice of tool. Further advice can be found at www.hse.gov.uk

Emergency

Familiarize yourself with the use of this product by means of this instruction manual. Memorize the safety directions and follow them to the letter. This will help to prevent risks and hazards.

- 1. Always be alert when using this product, so that you can recognize and handle risks early.** *Fast intervention can prevent serious injury and damage to property.*
- 2. Switch off and disconnect from the power supply if there are malfunctions.** *Have the product checked by a qualified professional and repaired, if necessary, before you operate it again.*

Residual risks

Even if you are operating this product in accordance with all the safety requirements, potential risks of injury and damage remain. The following dangers can arise in connection with the structure and design of this product:

1. Health defects resulting from vibration emission if the product is being used over long periods of time or not adequately managed and properly maintained.
2. Injuries and damage to property due to broken accessories or the sudden impact of hidden objects during use.


3. Danger of injury and property damage caused by flying objects.
4. Prolonged use of this product expose the operator to vibrations and may produce ‘whitefinger’ disease. In order to reduce the risk, please wear gloves and keep your hands warm. If any of the ‘whitefinger’ symptoms appear, seek medical advice immediately. ‘Whitefinger’ symptoms include: numbness, loss of feeling, tingling, pricking, pain, loss of strength, changes in skin color or condition. These symptoms normally appear in the fingers, hands or wrists. The risk increases at low temperatures.



WARNING! This product produces an electromagnetic field during operation! This field may under some circumstances interfere with active or passive medical implants! To reduce the risk of serious or fatal injury, we recommend persons with medical implants to consult their doctor and the medical implant manufacturer before operating this product!

Symbols

On the product, the rating label and within these instructions you will find among others the following symbols and abbreviations. Familiarise yourself with them to reduce hazards like personal injuries and damage to property.

V 	Volt, (direct current voltage)	km/h	Kilometre/Per hour
mAh	Milliampere per hour	mm	Millimetre
m	Metre	kg	Kilogram
l	Litre	m/s ²	Metres per second squared
cm ³	Cubic centimetre	dB(A)	Decibel (A-rated)
yyWxx	Manufacturing date code: year of manufacturing (20yy) and week of manufacturing (Wxx).		



Read the instruction manual.



Caution / Warning.



Wear eye protection



Wear ear protection



Wear safety footwear



Wear protective gloves



Wear safety helmet!



Wear protective clothing



Use appropriate protection for foot-leg and hand-arm.



WARNING –Beware of blade thrust



WARNING –Disconnect battery before maintenance



Do not use metal blades.



Keep sufficient distance away from electrical power lines.



Objects thrown by the product could hit the user or other bystanders. Always ensure that other people and pets remain at a safe distance from the product when it is in operation. In general, children must not come near the area where the product is. Minimum distance 15m.



WARNING – The distance between the machine and bystanders shall be at least 15 m



Kickback! Tip contact may cause the guide bar to move suddenly upward and backwards what may cause serious injury to user.



Contact of the guide bar tip with any object should be avoided.



Always use the product with two hands. Do not use one handed when operating the product.



Do not use in rain or wet conditions.



Guaranteed sound power level value in XX dB(A).



Chain oil fill



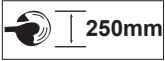
Correct direction of cutting-teeth



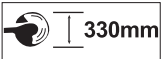
Danger of falling objects.



Keep hands away from moving cutting device!



Brush cutter cutting width 250mm.



Grass trimmer cutting width 330mm.



Guide bar length 250mm.



WEEE symbol. Waste electrical products should not be disposed of with household waste. Please recycle where facilities exist. Check with your Local Authority or local store for recycling advice.



Crossed out dust bin. Batteries and battery packs should not be disposed of with household waste. Please recycle where facilities exist. Check with your Local Authority or local store for recycling advice.



Do not dispose of battery packs in rivers or immerse in water.



Do not dispose of battery packs in fire. They will explode and cause injury.



Do not expose battery packs to heat in excess of 40 °C.

Do not charge or store the battery pack in temperatures below 5 °C (41 °F) and above 40 °C (104°F).



The product complies with the applicable Your product European directives and an evaluation method of conformity for these directives was done.



UK Conformity Assessed.

Rating label explanation

Cordless multi-tool: ERT1029GMT

ER = Brand name (Erbauer)

T = 36V Lithium-Ion

1029 = Serial number

GMT = Garden multi-tool

EN Technical specifications

General:

- > Rated voltage 36V $\overline{\text{---}}$
- Extension pole

For Grass trimmer:

- > Rated no-load speed n_0 5000&6000 \pm 5% /min
- > Trimming line Non-metallic(nylon),2.0mm
- > Cutting width 38cm
- > Total length of cutting line 5m
- > Weight(without battery pack, cutting head and harness.) 4.45kg

For Brush Cutter:

- > Rated no-load speed n_0 5000&6000 \pm 5% /min
- > Brush cutting device Mental cutting blade
- > Blade reference Punch
- > Blade size \varnothing 250 x \varnothing 25.4 x 2mm, 3T
- > Weight(without battery pack, cutting accessory, cutting accessory cover, harness) 4.065kg

Battery pack (may not be included)

- | | | |
|-------------|---|---|
| > Model no. | ERT1044BAT | ERT1045BAT |
| > Type | Li-Ion | Li-Ion |
| > Voltage | 18V $\overline{\text{---}}$ / 36V $\overline{\text{---}}$ | 18V $\overline{\text{---}}$ / 36V $\overline{\text{---}}$ |
| > Capacity | 8 Ah / 4Ah | 6 Ah / 3 Ah |
| > Weight | approx. 1.2 kg | approx. 1.2 kg |

Charger for battery pack (may not be included)

- | | | |
|--|-----------------------------------|---|
| > Model no. | ERT1047CHR | ERT1046CHR |
| > Rated input | 220-240 V~ 50/60 Hz | 220-240 V~ 50/60 Hz |
| > Rated output | 21 V $\overline{\text{---}}$ 12 A | 21 V $\overline{\text{---}}$ x2 12 A x2 |
| > Ambient temperature range for machine, battery and charger to use. | 5°C to 40°C | 5°C to 40°C |

Sound values(For Grass trimmer):

- > Sound pressure level L_{pA} 81dB
- > Uncertainty K_{pA} 3dB
- > Measured sound power level L_{WA} 91dB
- > Uncertainty K_{WA} 1.1dB
- > Guaranteed sound power level 93 dB
- > Front handle vibration value a_h 4.23m/s

> Rear handle vibration value a_h 4.74m/s

Sound values (For brush cutter):

> Sound pressure level L_{pA} 82dB
> Uncertainty K_{pA} 3dB
> Measured sound power level L_{WA} 93dB
> Uncertainty K_{WA} 1.6dB
> Guaranteed sound power level 93 dB
> Front handle vibration value a_h 2.44m/s
> Rear handle vibration value a_h 1.53m/s

Sound values (For pole hedge trimmer):

> Sound pressure level L_{pA} 85 dB
> Uncertainty K_{pA} 3 dB
> Measured sound power level L_{WA} 93 dB
> Uncertainty K_{WA} 1.0 dB
> Guaranteed sound power level 94 dB
> Front handle vibration value a_h 2.23 m/s²
> Rear handle vibration value a_h 1.86 m/s²

Sound values (For pole saw):

> Sound pressure level L_{pA} 93 dB
> Uncertainty K_{pA} 3 dB
> Measured sound power level L_{WA} 99 dB
> Uncertainty K_{WA} 0.8 dB
> Guaranteed sound power level 100 dB
> Front handle vibration value a_h 2.23 m/s²
> Rear handle vibration value a_h 2.15 m/s²



NOTE: The sound value(s) have been determined according to noise test code given in EN IEC 62841-1, EN IEC 62841-4-2, IEC 62841-4-4, EN ISO 11806-1 and EN ISO 11680-1, using the basic standards EN ISO 22868, EN ISO 11201 and EN ISO 3744. The sound intensity level for the operator may exceed 80 dB(A) and ear protection measures are necessary.

The declared total vibration value(s) and the declared noise emission value(s) have been measured in accordance with a standard test method and may be used for comparing one tool with another;

The declared total vibration value(s) and the declared noise emission value(s) may also be used in a preliminary assessment of exposure.



WARNING! The vibration and noise emission during actual use of the power tool can differ from the declared total value depending on the ways in which the tool is used especially what kind of workpiece is processed;

The need to identify safety measures to protect the operator that are based on an estimation of exposure in the actual conditions of use (taking account of all parts of the operating cycle such as the times when the tool is switched off and when it is running idle in addition to the trigger time).



EN Before you start

Unpacking

1. Unpack all parts and lay them on a flat, stable surface.
2. Remove all packing materials and shipping devices if applicable.
3. Make sure the delivery contents are complete and free of any damage. If you find that parts are missing or show damage do not use the product but contact your dealer. Using an incomplete or damaged product represents a hazard to people and property.
4. Ensure that you have all the accessories and tools needed for assembly and operation. This also includes suitable personal protective equipment.



WARNING! The product and the packaging are not children's toys! Children must not play with plastic bags, sheets and small parts! There is a danger of choking and suffocation!

You will need

(items not supplied)

Suitable personal protective equipment
Lubricant for pole saw

(items supplied)

Trimmer head
Cutting blade
Guide bar & Chain
Extension pole
Shoulder strap



NOTE: The accessories required depend on the intended application. Ask your dealer for advice.

EN Assembly



WARNING! The product must be fully assembled before operation! Do not use a product that is only partly assembled or assembled with damaged parts!



WARNING! Disconnect the battery pack from the machine before making any assembly, adjustments, changing accessories, or storing machine. Such preventive safety measures reduce the risk of starting the machine accidentally.



Follow the assembly instructions step-by-step and use the pictures provided as a visual guide to easily assemble the product!

Before using the product, familiarise yourself with the operating features read the entire instruction manual paying particular attention to the safety rules and operating procedures.

Do not connect the product to battery pack before it is completely assembled!

Power head:

Installing/Removing a Power Head Attachment



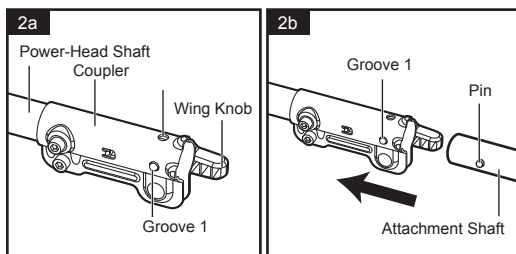
WARNING! Never install, remove, or adjust any attachment while the power head is running or with the battery installed. Failure to stop the motor and remove the battery can cause serious personal injury.



WARNING! NEVER OPERATE THE POWER HEAD WITHOUT AN ATTACHMENT.

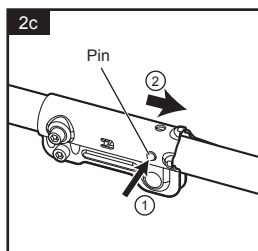
Installing a power head attachment (Fig. 2a & 2b)

- a. Remove the battery pack.
- b. Loosen the wing knob.
- c. The power head has two grooves on the coupler, ONLY the groove 1 is used to connect an attachment.
- d. Align the spring-loaded pin on the attachment shaft with the groove 1 on the coupler and push the attachment shaft into the power head shaft until the pin pops out of the groove and you hear an audible “click” sound at the same time.
- e. Pull the attachment shaft to verify that it is securely locked into the coupler.
- f. Tighten the wing knob securely.



Removing the attachment from the power head (Fig. 2c)

- a. Remove the battery pack.
- b. Loosen the wing knob.
- c. Press down the spring-loaded pin and pull the attachment shaft out of the coupler.



Refer to Installing/Removing a Power Head Attachment for extension pole Installing/Removing

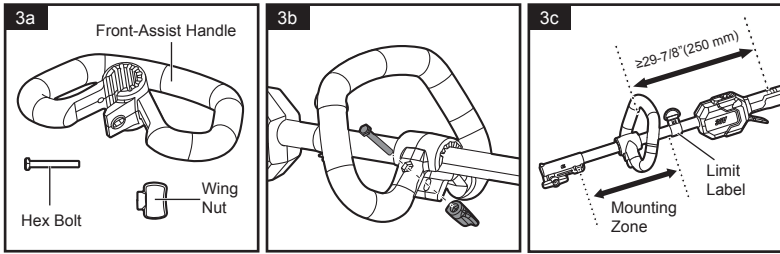
Mounting and Adjusting the Front-Assist Handle (Fig. 3a & 3b & 3c)

- a. Remove the battery pack from the power head.
- b. Loosen the wing nut and remove it along with the hex bolt from the front-assist handle.
- c. Press the front-assist handle onto the shaft and reinstall the hex bolt and the wing nut. Turn the front-assist handle upward so that it points toward the top of the rear handle.
- d. Adjust the front-assist handle position so that it is within the mounting zone, as shown in Fig. 3c. The handle should be positioned so that the arm that is holding the handle is straight when using the power head.



WARNING! e. The front-assist handle should be positioned within the mounting zone, not exceeding the limit label, so that the distance between the center of the handles is at least 250 mm for safe operation.

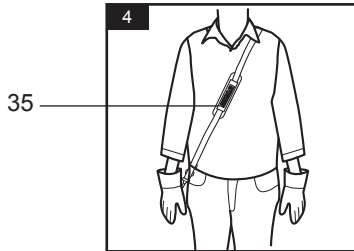
- f. Tighten the wing nut to prevent the handle from rotating around the shaft.



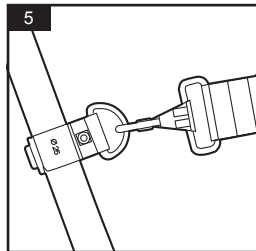
Shoulder strap

The shoulder strap (35) helps the operator carry this product.

- a) Place the shoulder strap (35) over your left shoulder so that it runs over the left shoulder, crossing the chest and back. (Fig. 4).



- b) Fasten the snap hook on the securing clip on the shaft (Fig. 5).
- c) The harness can be buckled or released with shoulder strap loop by the quick-release mechanism.



- d) The length of the shoulder strap can be adjusted.

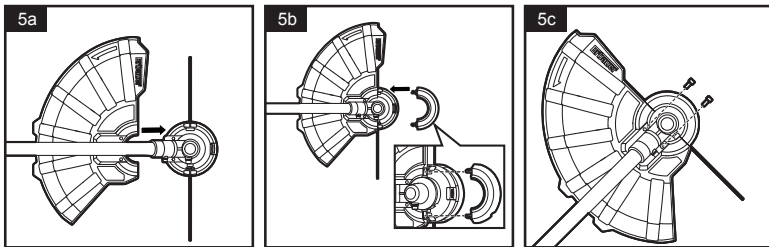


WARNING! Always attach the product to the shoulder strap. Do not carry it only with your hands!

Grass Trimmer:

MOUNTING THE GUARD (FIG. 5a&5b&5c)

1. Lift the trimmer head (8) and face it downward.
2. Slide the big guard into the slot on the trimmer head ensuring that the mounting holes align. (Fig.5a)
3. Slide the small guard into the slot on the trimmer head and ensuring that it engages with big guard.(Fig.5b)
4. Lock the guard in place with the 2 screws supplied. (Fig.5c)



Brush cutter:

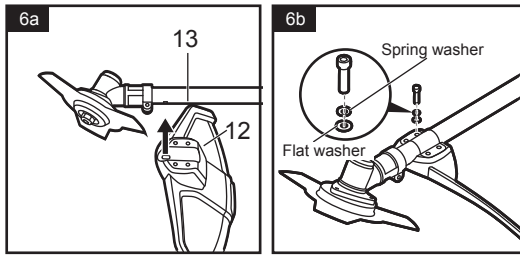


WARNING! Install the guard before the attachment is connected to the power head. To reduce the risk of injury to persons, do not operate without guards in place. The guard must always be on the tool to protect the user. Always wear gloves when mounting or replacing the guard. Be careful of the blade and protect your hands from being injured by the blade.

1. Lift the brush cutter attachment(13) and face it downward; align the raised portion of the guard(12) with the matching slot in the shaft. Make sure that the internal surface of the guard faces the cutter head.
2. Place the bracket onto the attachment shaft (13), align the holes in the bracket with the holes on the blade guard (12).
3. Lock the guard in place with 4 screws, spring washers and flat washers supplied.



NOTE: Take off the blade cover before using and save it for storage.

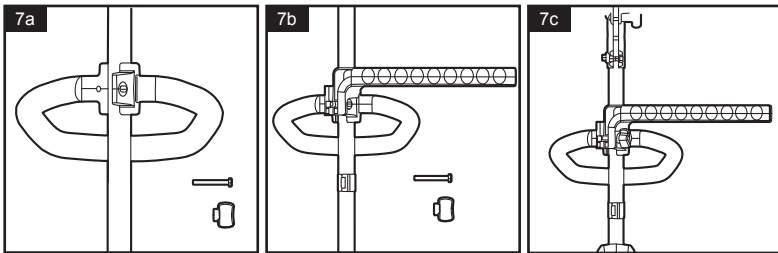


Installing the Barrier



WARNING!

- Install the guard before the attachment is connected to the power head.
 - To reduce the risk of injury to persons, do not operate without guards in place. The guard must always be on the tool to protect the user.
1. Lift the power head and turn upside down on a flat surface and loose the wing nut.
 2. Align the slot of the barrier (32) with the front assist handle (31), and then tighten the wing nut so that it cannot move during operation



Pole hedge trimmer:

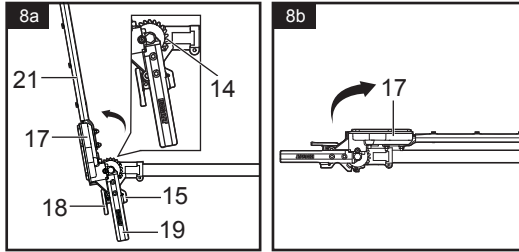
Unfolding and Folding the Cutting Head

Unfolding the attachment

- a. Ensure that the blade sheath (21) is in place and the battery pack is disconnected from the power head.
- b. Hold the handle (19), squeeze the locking levers (18) and (15) together, and hold them in position.
- c. Unfold the cutting head (17) of the attachment to desired position.
- d. Release the locking levers to lock the angle adjustment mechanism. Ensure that the locking pin is securely engaged in one of the locking notches (14).

Folding the attachment

- a. Ensure that the blade sheath (21) is in place and the battery pack is disconnected from the power head.
- b. Hold the handle (19), squeeze the locking levers (18) and (15) together, and hold them in position.
- c. Fold the cutting head (17) next to the shaft.
- d. Release the locking levers.



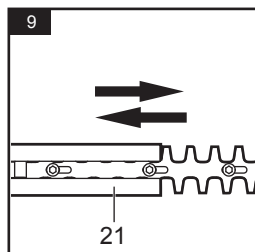
To Remove/Install the Blade Sheath



WARNING! Always wear gloves when removing or installing the blade sheath. Be careful of the blade and protect your hands from being injured by the blade.

Always remove the battery pack from the power head when you are assembling parts, making adjustments, cleaning, or when the product is not in use.

- a. The hedge trimmer attachment is shipped with the blade sheath (21) installed. Before use, slide the blade sheath off along the blade ridge and remove it.
- b. After using and before storing or transporting the hedge trimmer, clean the blade and insert the blade into the sheath.

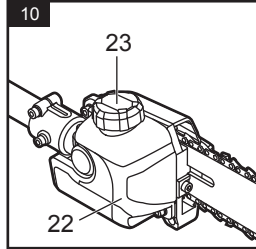


Pole saw:

Filling Oil tank with Bar and Chain Lubricant

The pole saw is not filled with oil at the time of purchase. It is essential to fill the tank with oil before use. Operating the pole saw without chain oil or when the oil level is below the minimum mark will result in damage to the saw. Chain life and cutting capacity depend on optimum lubrication.

The chain is automatically lubricated with chain oil from the tank during operation.



WARNING! Do not smoke or bring any fire or flame near the oil or the saw. Oil may spill and cause a fire.

1. Turn the pole saw off. Remove the battery pack from the power head.
2. Wipe the oil-tank cap (23) and the area around it to ensure that no dirt falls into the oil tank.
3. Position the pole saw on its side on a firm, flat surface, so that the oil-tank tank cap is facing upwards. Rotate the oil-tank cap counterclockwise to remove it.
4. Carefully pour the oil into the tank (22). Fill to the bottom of the fill neck. Wipe off any excess oil.
5. Replace the cap, place the saw upright, and check the oil level. Oil should fill the tank but not exceed the "MAX" (maximum) level mark.

NOTICE:

Use Oregon bar and chain oil for best results. It is specially designed to provide reduced friction and faster cuts.

Never use oil or other lubricants not specifically designed for use on the bar and chain. This can lead to a clogged oil system, which may cause premature wear of the bar and chain.

Check the oil level frequently and fill when the oil level falls below the minimum line. Never operate the pole saw if the oil is not visible.

Do not use dirty, used, or otherwise contaminated oil. Damage may occur to the bar or chain.

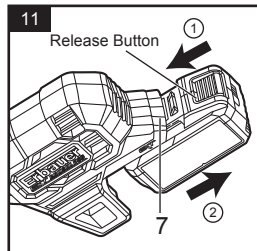
It is normal for oil to seep from the saw when it is not in use. To prevent seepage, empty the oil tank after each use, and then run the saw for one minute. When storing the tool for a long period of time, be sure the chain is lightly lubricated; this will prevent rust on the chain and bar sprocket.

To preserve natural resources, please recycle or dispose of oil properly. Consult your local waste authority for information regarding available recycling and disposal options.

Battery pack

Attaching / releasing the battery pack(Fig.11)

1. Slide the battery pack into the battery docking port (7) until it is securely locked in position.
2. Depress the battery pack release button to release and slide the battery pack out from your tool. (Fig. 11)



3. After recharge, slide the battery pack back into your tool. A simple push and slight pressure will be sufficient.

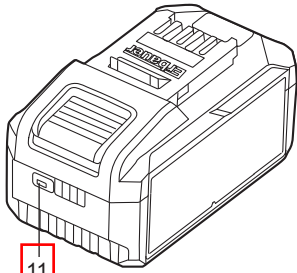
Charging the battery pack

The battery pack for this product has been shipped in a low charge condition. Charge it fully before first use.

Refer to the charger's instruction manual for the details.

Battery pack power bar(Fig.12)

The Li-Ion battery pack is equipped with a power bar which is used to give an indication of the battery pack's remaining charge. Press the power bar button to check battery charge as below. The LED will stay lit for approximately 5 seconds.



11

■ On □ Off

76-100% Charge



51-75% Charge



26-50% Charge



5-25% Charge



EN Functions & settings

Intended use

The product is multifunctional and can be used as grass trimmer, brush cutter, pole saw and pole hedge trimmer according to the intended operation with the desired tool attachments.

Grass trimmer: with the trimming head attached, the product is intended for cutting weed, grass or similar soft vegetation. It may not be used to work on unusual thick, or wet grass, e. g. pasture grass, or to shred leaves.

Brush cutter: with the blade attached, the product is intended to cut heavier weeds, brush and similar vegetation with a thickness of up to 20mm.

Pole saw: with the saw chain / guide bar assembly attached, the product is intended for cutting limbs. It must not be used for cutting other materials, such as plastic, stone, metal or wood that contains foreign objects. It may only be used with the guide bar/ saw chain combination stated in these instructions. It is not permitted to use other types or sizes.

Pole hedge trimmer: with the hedge trimmer blade, the product is intended for cutting and trimming of high and wide hedges, bushes and shrubs in domestic gardens. The maximum cutting capacity must be observed. Do not cut branches exceeding the stated maximum capacity. For safety reasons, it is essential to read the entire instruction manual before first operation and to observe all the instructions therein.

Note: The four working mode can switch by changing the working shaft, but cannot change cutting head or cutting attachment.

Power head Switching on/off



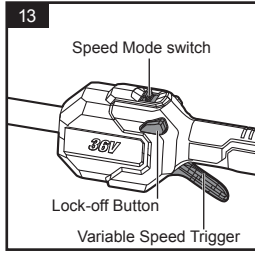
WARNING! Never operate the power head without an attachment. Do not attempt to start the power head without an attachment.

To start the power head

1. To turn the power head ON, push the lock-off button to the left or right and then depress the variable-speed trigger.
2. The variable-speed trigger delivers higher speed with increased trigger pressure and lower speed with decreased trigger pressure.
3. Push the speed mode switch forward is speed 2, and pull it back is speed 1.

To stop the power head

Release the variable-speed trigger to stop the power head.



WARNING! The product will continue to work for some time even after the motor has been switched off! Wait until it comes to a complete stop before you put the product down! Always remove the battery pack from the power head during work breaks and after finishing work.

EN Operation

General operation

1. Check the product, its battery packs and charger as well as accessories for damage before each use. Do not use the product if it is damaged or shows wear.
2. Double check that the accessories and attachments are properly fixed.
3. Always hold the product by its handles. Keep the handles dry to ensure safe support.
4. Ensure that the air vents are always unobstructed and clear. Clean them if necessary with a soft brush. Blocked air vents may lead to overheating and damage the product.
5. Switch the product off immediately if you are disturbed while working by other people entering the working area. Always let the product come to a complete stop before putting it down.
6. Do not overwork yourself. Take regular breaks to ensure you can concentrate on the work and have full control over the product.



WARNING! In some countries regulations define at what time of the day and on what special days products are allowed to be used and what restrictions apply! Ask your community for detailed information and observe the regulations in order to preserve a peaceful neighborhood and avoid committing administrative offences!

Operating hours

Only operate the product at reasonable hours - not early in the morning, late at night or on weekends/public holidays when people might be disturbed. Inform yourself about local restrictions.

Grass trimmer:

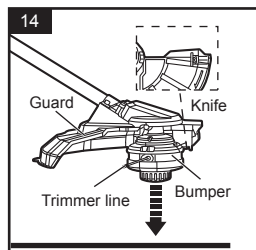
Trimming line feeding

During use, the tip of the trimming line gets shorter due to wear. Regularly check the condition of the trimming line and adjust if necessary. The trimming head is equipped with a bumper helping to release the trimming line while operating.



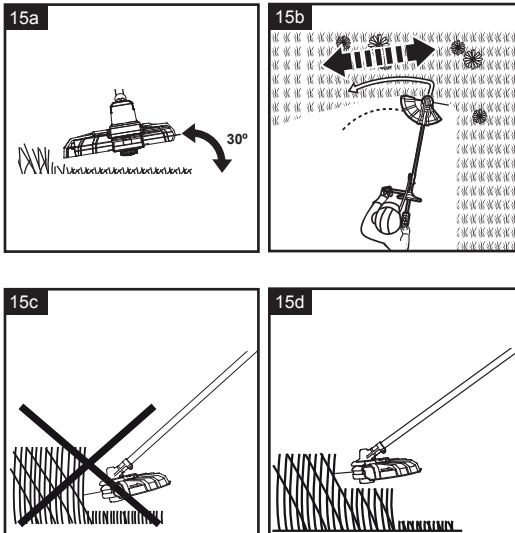
NOTE: The line feeding system works only when the product is switched on.

1. Tap the bumper on solid ground and the spool releases trimming line.
2. Excess line is by the knife and should always remain inside the radius of the guard.



Trimming:

1. Attach the grass trimmer attachment shaft.
2. Hold the product firmly with a gap between the product and your right side
3. Stand upright, do not lean forward and pay attention to posture. Keep both feet apart to help retain your balance.
4. Hold the cutting head just above the ground at an angle of approximately 30° (Fig. 15a).
5. Move the product with a slow regular arc from right to left before moving it back to the starting position and then trimming the next area (Fig. 15b).
6. Ensure the cutting attachment remains clean and free from off-cuts that may cause it to jam. Check regularly. Release the on/off switch and remove the battery packs before checking.
7. Trim longer grass in stages; do not cut long grass in one cut (Fig. 15c). For the best results, cut longer grass in steps (Fig. 15d).
8. For best results, do not cut wet grass because it tends to stick to the trimmer head and guard, prevents proper discharge of grass trimmings, and could cause you to slip and fall.
9. Pay special attention when performing the work close to trees and bushes. The trimming line could damage sensitive bark and fence posts.



Brush cutter:

Using the Brush Cutter:



WARNING! To avoid serious personal injury, wear goggles or safety glasses at all times when operating this unit. Wear a face mask or dust mask in dusty locations. Wear proper clothing and footwear during operation to reduce the risk of injury that may be caused by flying debris.



WARNING!

1. Clear the area to be cut before each use. Remove all objects, such as rocks, broken glass, nails, wire, or string that can be thrown or become entangled in the cutting attachment. Clear the area of children, bystanders, and pets. At a minimum, keep all children, bystanders, and pets at least 15 m away. Stop the tool immediately if anyone approaches.
2. The correct angle for the cutting attachment is parallel to the ground.
3. Hold the brush cutter with both hands. One arm is slightly bent, and the hand of that arm is holding the rear handle. The other arm is straight, with that hand holding the front-assist handle.
4. Use with the shoulder strap for safe and comfortable operation, See “**SHOULDER STRAP**” assembly section.
5. To cut wild growth and shrub, lower the rotating blade down onto the growth to achieve a chopping effect. Use the brush cutter like a scythe (sweep it to the right and left) at ground level. Do not use the cutting attachment above waist height.
6. Keep a good balance and a firm foothold. Do not overreach. Keep proper footing and balance at all times.
7. Sometimes branches or grass get caught between the guard and cutting attachment. Always stop the tool before cleaning.
8. Never put the tool down with the blade rotating.



WARNING! When cutting young stands or other plants up to 2 cm in diameter, use the left side of the blade to avoid blade thrust situations. Do not attempt to cut plants with a larger diameter, since the blade may catch or jerk the brush cutter forward. This may cause damage to the blade or the brush cutter or loss of control of the brush cutter resulting in personal injury.



WARNING!

1. Improper use of a brush cutter blade may cause it to crack, chip, or shatter.
2. Resharpener the blade regularly (when it has dulled noticeably) and have it balanced if necessary (performed by a qualified service technician).
3. With particular emphasis on the effects of blade thrust behaviour that may result if specifications are not followed.

Clean the blade after each use



WARNING!

1. To prevent serious personal injury, remove the battery pack from the tool before servicing, cleaning, changing attachments or removing material from the unit.
2. Clear any grass, debris or clogged soil from the blade and guard.
3. Use only a clean, dry and soft cloth to clean the tool. Never let any liquid get inside the tool; never immerse any part of the tool into a liquid.
4. Never use water for cleaning your tool. Avoid using solvents when cleaning plastic parts. Most plastics are susceptible to damage from various types of commercial solvents. Use clean clothes to remove dirt, dust, oil, grease, etc.

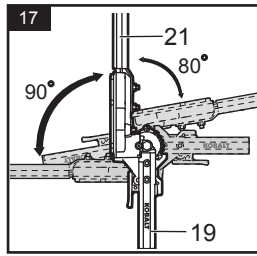
Pole hedge trimmer:

Adjusting Cutting Head Angle



WARNING! Always wear gloves when adjusting the trimmer. Be careful of the blade and protect your hands from being injured by the blade.

- Always remove the battery pack from the power head when you are assembling parts, making adjustments, cleaning, or when the product is not in use.
- a. Ensure that the blade sheath (21) is in place and the battery pack is disconnected from the power head).
 - b. Hold the handle (19), squeeze the locking levers (18) and (15) together, and hold them in position (See Fig. 17).
 - c. Adjust the angle of the cutting head (17). The cutting head (17) can be positioned anywhere within the 90° range left from the vertical position or within 80° right from the vertical position.
 - d. Release the locking levers to lock the angle adjustment mechanism. Ensure that the locking pin is securely engaged in one of the locking notches (14) (See Fig. 17).



Using the Hedge Trimmer



WARNING!

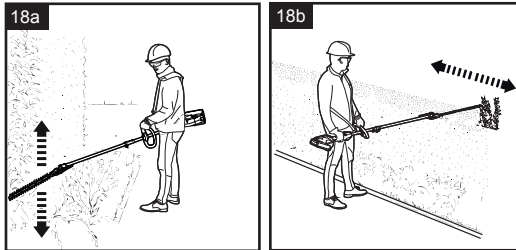
- If any parts are missing, damaged or broken, do not operate your trimmer until they have been replaced. Failure to do so could result in possibly serious personal injury.
- To prevent serious personal injury, always use both the front-assist handle and the rear handle to hold the hedge trimmer during operation. Keep hands away from blades. Do not attempt to remove cut material or hold material to be cut when the blades are moving.
- Make sure that the blades have stopped completely and the battery pack is removed before clearing jammed material from the blades. Do not grasp the exposed cutting blades or cutting edges when picking up or holding the unit.
- Clear the area to be cut before each use. Remove all objects, such as cords, lights, wire, or string, that could become entangled in the cutting blade and create a risk of serious personal injury.
- If the blade jams on any electrical cord or line, **DO NOT TOUCH THE BLADE! IT CAN BECOME ELECTRICALLY LIVE AND VERY DANGEROUS.** Continue to hold the hedge trimmer by the insulated rear handle or lay it down and away from you in a safe manner. Disconnect the electrical service to the damaged line or cord before attempting to free the blade from the line or cord. Failure to heed this warning will result in serious personal injury or possible death.

Tips for best trimming results

- Before each use, inspect the entire product for damaged, missing, or loose parts such as screws, nuts, bolts, etc. Tighten securely all fasteners and do not operate this product until all missing or damaged parts are replaced.
- Before starting the hedge trimmer, maintain proper footing and balance and do not overreach. Do not operate the trimmer in a tree, on a ladder, from a rooftop, or any unstable support. Wear safety goggles, non-skid footwear and rubber gloves. Hold the unit with both hands, with the cutting blade directed away from you.
- Use with the shoulder strap for safe and comfortable operation.
- Do not trim too much at one time. This can cause the blades to bind and slow, reducing the cutting efficiency.
- Do not force the hedge trimmer through heavy shrubbery. This can cause the blades to bind and slow down. If the blades slow down, slow the pace of your work.
- When trimming new growth, use a wide sweeping action so that the stems are fed directly into the cutting blade. Older growth will have thicker stems and will be trimmed most

easily by using a sawing (back-and-forth) motion.

- Always cut stems or twigs that are less than 20 mm thick. Use a non-powered hand saw or pruning saw to trim larger stems. The maximum cutting capacity must be observed. Do not cut branches exceeding the stated maximum capacity.
- When trimming the sides of the hedge, begin at the bottom and cut upward. Trim the side of a hedge so that the hedge will be slightly narrower at the top. This shape will expose more of the hedge to sunlight, resulting in more uniform growth (Fig. 18a).
- Use a wide sweeping motion. A slight downward tilt of the cutting blades in the direction of motion provides the best cutting results. If desired, you can use a string to help guide you as you cut the hedge level. Trim the hedge just above this guide line (Fig. 18b).



Pole saw:

Before Using the Pole Saw:

Refer to “**Safety Information**” earlier in this manual for appropriate safety equipment.

Kickback



WARNING! Beware of kickback! Kickback can lead to dangerous loss of control of the product and result in serious or fatal injury to the operator or anyone standing close by! Always be alert because rotational kickback and pinch kickback are major product operational dangers and the leading cause of most accidents!



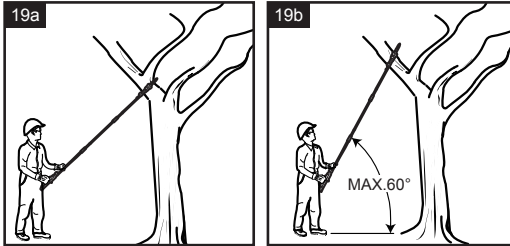
1. Kickback is the sudden backward/upward motion of the product, occurring when the chain (at the tip of the chain bar) comes in contact with a log or wood, or when the chain becomes jammed.
2. When kickback occurs the product reacts unpredictably and can cause severe injuries to the operator or bystanders.
3. With a basic understanding of ‘kickback’, the element of surprise can be reduced or eliminated. Sudden surprise contributes to the majority of accidents.
4. You should read all the safety warnings and user instructions carefully before attempting to operate this product.

To avoid kickback:

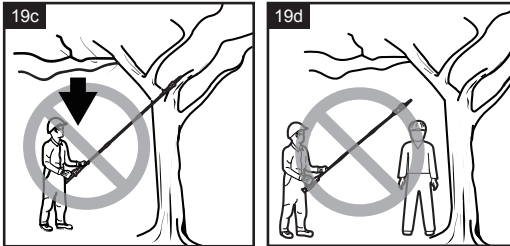
- Never work with a loose, widely stretched or heavily worn chain.
- Always use a low kickback chain.
- Ensure correct chain tension.
- Ensure the chain is sharpened correctly.
- Never work with the tip of the guide bar.

- Saw with the guide bar at a flat angle.
- Always hold the product firmly with both hands.

Pruning



1. Always hold the product firmly with both hands on gripping surface and assistant handle. Never operate this product using only one hand (Fig. 19a).
2. Maintain a firm grip with your thumbs and fingers encircling the handles. A firm grip will help you reduce 'kickback' and maintain control of the product.
3. Always hold the product at an angle of not more than 60° from the horizontal level. Otherwise safe operation is not possible (Fig. 19b).
4. Never stand directly under the limb you are sawing. Objects may fall different than expected. Always position yourself out of the path of falling limbs (Fig. 19c).
5. Keep other persons away from cutting end of product and at a safe distance from the work area. Maintain a minimum distance of 15 m to bystanders (Fig. 19d).

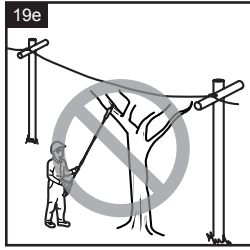


WARNING! Never climb into a tree to prune! Do not stand on ladders, platforms, logs, or in any position which may cause you to lose your balance or control of the product! When pruning trees, it is important not to make the flush cut next to main limb or trunk until you have cut off the limb further out to reduce the weight! This prevents stripping the bark from the main member!

6. Never stand on a ladder or other type of unstable support while using the product. Insecure stand invites hazards.

WARNING! This product has not been designed to provide protection from electric shock in the event of contact with overhead electric lines! Therefore do not use product near cable, electric power or telephone lines. Keep a minimum distance of 15 m to all electric lines (Fig. 19e).





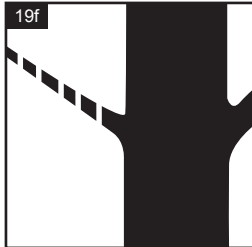
7. Use the product only with secure footing. Hold the product at the right-hand side of your body. Regularly change the working position and include rest periods during operation.
8. Do not operate the product with arms fully extended or attempt to cut areas which are difficult to reach.
9. Keep a firm, steady pressure on the product while working with it. Do not try to force the product through the wood, let the cutting device do the work, using the gripping teeth to apply minimal leverage pressure.
10. Beware when reaching the end of the cut. The weight of the product may change unexpectedly as it cuts free from the wood. Accidents can occur to the legs and feet. Always remove the product from a wood cut while it is running.



NOTE: The chain must be running at full speed before it comes into contact with the wood.

Thin branches

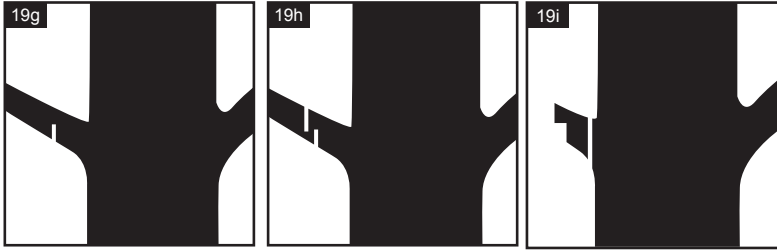
Thin branches can be cut off with one single cut. To prevent the branch from splintering and buckling the branch should be cut off in several pieces (Fig. 19f).



Thick branches

When cutting off larger branches three cuts are necessary.

1. First cut into the branch from below outside the place where you intend to cut off the branch. The cut should go from one third to halfway through the branch (Fig. 19g).



2. Cut into the branch from the top outside at the same height the branch is sawn from top (Fig. 19h).
3. Last, cut off the stump with one clean cut from top to bottom (Fig. 19i).
4. You might want to seal the cut with a suitable compound.



NOTE: Remove the branches lying on the floor regularly to avoid stumbling hazards. Check the oil level regularly and fill up if necessary. Switch the power off and disconnect from power source when leaving the product.

After use

1. Move the pole saw away from cutting area, and switch the product off.
2. Remove the battery pack and let the pole saw cool down.
3. Check, clean and store the product as described below.

EN Care and maintenance

The golden rules for care



WARNING! Always switch the product off, remove the battery pack and let the product cool down before performing inspection, maintenance and cleaning work!

1. Keep the product clean. Remove debris from it after each use and before storage.
2. Regular and proper cleaning will help ensure safe use and prolong the life of the product.
3. Inspect the product before each use for worn and damaged parts. Do not operate it if you find broken and worn parts.



WARNING! Only perform repairs and maintenance work according to these instructions! All further works must be performed by a qualified specialist! Improper maintenance may cause serious injuries.

General cleaning

1. Make sure the product is switched off, cooled down and the battery pack is removed.
2. Clean the product with a slightly damp cloth and mild soap. Use a brush for areas that are hard to reach.
3. In particular clean the air vents after every use with a cloth and brush.
4. Remove stubborn dirt with high pressure air (max. 3 bar).
5. Cleaning and maintenance before storage.



NOTE: Do not use chemical, alkaline, abrasive or other aggressive detergents or disinfectants to clean this product as they might be harmful to its surfaces.

6. Check for loose fasteners, fuel leaks and damaged and worn parts. Repair damages in accordance with this instruction manual or take it to an authorised service centre before using the product again.

Grass trimmer:

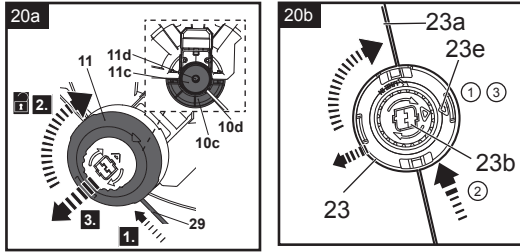
Trimming line replacement



NOTE: The thread on the spindle is left-hand. Turn clockwise to remove and turn anticlockwise to secure the trimmer head.

1. Turn the product upside down to access the trimmer head (8).
2. Rotate the trimmer head until the hole on the flange (8c) is aligned with the notch (8d) on the arc latch (8c).
3. Insert the locking pin (33) into the hole to lock the spindle (8d) (Fig. 20a, step 1).
4. Loosen the trimmer head clockwise (step 2) and remove it from the spindle (step 3).
5. Turn the bumper clockwise until the arrow (8e) on the bumper aligns with the arrow on the trimmer head (8) exactly (Fig. 20b, step 1). Turn the bumper anticlockwise slightly if necessary.
6. Insert the trimming line into the "line in" hole of the trimmer head until it appears at opposite hole (step 2). Maintain the same length of trimming line on each side (e.g. for a 4 m long trimming line, ensure there are 2 m on each side).

7. Turn the bumper clockwise to wind the trimming line in (step 3) until around 175 mm of trimming line remains on each side.
8. Tighten the trimmer head anti-clockwise on the spindle and remove the locking pin afterwards.



Brush cutter:

Changing the Blade



WARNING!

Do not attempt to straighten or weld a bent or cracked blade as it might break. Such a blade must be replaced. Replace only with identical blade.

NOTICE: Replace the blade if its length is no longer sufficient to maintain the necessary ground clearance and obtain the required depth of cut. Using other cutting attachments may cause serious injuries.



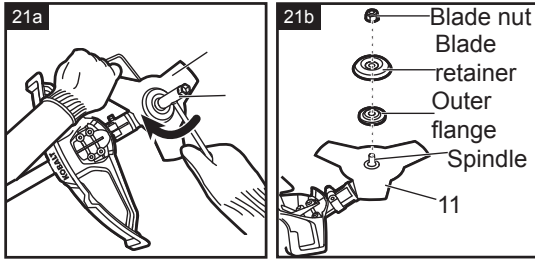
WARNING! Always protect your hands by wearing heavy gloves or wrapping the blade with rags or other materials when performing any maintenance on the blade.

Removing the blade

1. Stop the tool and remove the battery pack.
2. Lay the brush cutter attachment on its back so that the blade (11) is facing upwards.
3. While wearing protective gloves, hold the blade steady with one hand and loosen the blade nut **CLOCKWISE** using the multi-function wrench (34).
4. Remove the blade nut, blade retainer, outer flange, and the blade from the spindle (Fig. 21b). Check and replace them if they are worn.

Installing the blade

- a. Position the blade (11) onto the spindle.
- b. Mount the outer flange, blade retainer and the nut onto the spindle and pre-tighten the nut **COUNTERCLOCKWISE** by hand.
- c. Use the multi-function wrench (34) to tighten the nut **COUNTERCLOCKWISE** securely onto the shaft



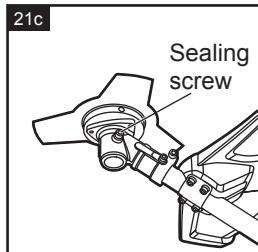
Transmission Gears Lubrication

The transmission gears in the gear case need be lubricated periodically with gear grease. Check the gear case grease level about every 50 hours of operation by removing the sealing screw on the side of the gear case.

If no grease can be seen on the sides of the gear, follow the steps below to fill with gear grease up to 3/4 capacity.

Do not completely fill the transmission gear case.

- Hold the cutter attachment on its side so that the sealing screw is facing upwards.
- Use the 5mm hex key (not included) to loosen and remove the sealing screw.
- Use a grease syringe (not included) to inject some grease into the screw hole, taking care not to exceed 3/4 capacity.
- Tighten the sealing screw after injection.



Pole hedge trimmer:

Lubrication

For best operation and longer blade life, lubricate the hedge trimmer blade with lightweight machine oil before and after each use.

Remove the battery pack from the power head. Lay the hedge trimmer on a flat surface. Apply some lightweight machine oil along the edge of the top blade.

If the hedge trimmer will be used for an extended period, it is advisable to stop, remove the battery pack from the power head, and oil the blade during use.

Pole saw:



WARNING!

- Before cleaning or performing any maintenance, remove the battery pack from the power head. For safe and proper operation, always keep the tool and its ventilation slots clean.
- When servicing, use only identical replacement parts. Use of any other parts may create a hazard or cause product damage.
- Always wear safety goggles or safety glasses with side shields during power tool operation or when blowing dust. If the operation is dusty, also wear a dust mask.
- When cleaning the pole saw, DO NOT immerse in water or other liquids.
- Do not at any time let brake fluids, gasoline, petroleum-based products, penetrating oils, etc., come in contact with plastic parts. Chemicals can damage, weaken, or destroy plastic, which may result in serious personal injury.

Replacing the Bar and Chain



WARNING! Always wear protective gloves when handling the bar and chain. These components are sharp and may contain burrs.

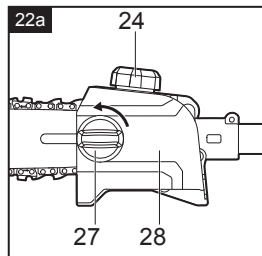
Never touch or adjust the chain while the motor is running.

NOTICE: When replacing the guide bar and chain, always use the specified bar and chain combination listed in this manual.

Disassembling the Worn Bar and Chain

1. Remove the battery pack from the power head, allow the saw to cool, then check the tightness of the oil tank cap (24).
2. For your convenience, remove the attachment from the power head.
3. Position the pole saw on its side on a firm, flat surface, so that the side cover (28) is facing upwards.
4. Rotate the side-cover knob (27) counterclockwise, then remove the side cover (28). Clean the side-cover with a dry cloth (Fig. 22a).
5. Remove the bar and chain from the mounting surface. Remove the worn chain from the bar.

NOTICE: This is a good time to inspect the drive sprocket for excessive wear or damage.



ASSEMBLING THE NEW BAR AND CHAIN

- Perform the steps “Disassembling the Worn Bar and Chain” above.
- Lay the new saw chain in a loop on a flat surface and straighten any kinks. The cutters should face in the direction of chain rotation, if they face backwards, turn the loop over (Fig. 22b).
- Place the chain-drive links into the guide-bar groove. Position the chain so there is a loop at the back of the guide bar (Fig. 22c).
- Place the loop around the drive sprocket of the power head.

NOTICE: Small directional arrows are engraved in the saw chain. Another directional arrow is molded into the saw housing. When looping the saw chain onto the drive sprocket, make sure that the direction of the arrows on the saw chain will correspond to the direction of the arrow on the housing. If they face in opposite directions, turn over the saw chain and guide bar assembly.

- Place the guide bar on the mounting surface by sliding the guide bar slot over the screw, making sure that the tension-adjusting pin is inserted in the lower hole in the tail of the bar (Fig. 22d).
- Replace the side cover (28) and lightly tighten the side-cover knob (27) by turning it clockwise, but do not fully tighten it (Fig. 22e).

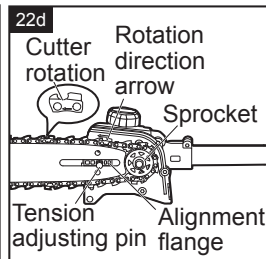
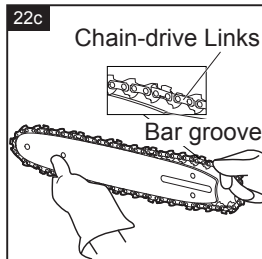
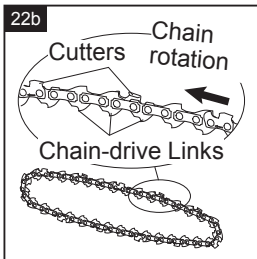


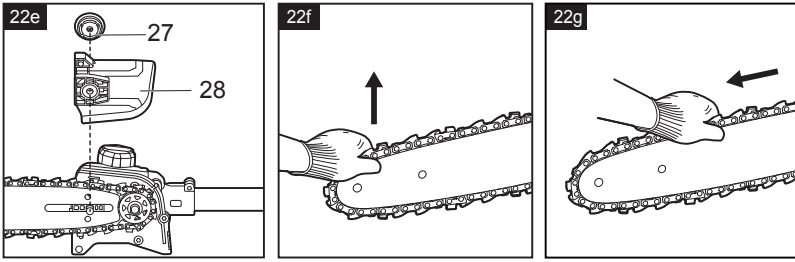
CAUTION:

The saw chain must be properly tensioned before using.

- Tighten the chain tension according to the chapter “Adjusting the Chain Tension” until the chain seats snugly against the guide bar with the drive links in the guide bar groove.
- Lift the tip of the guide bar up and pull outward to check for sag (Fig. 22f and 22g). Release the tip of the guide bar and turn the side-cover knob (27) once clockwise. Repeat this process until the sag is eliminated.

NOTICE: If chain is too tight, it will not rotate. Assure that the chain will rotate without binding.





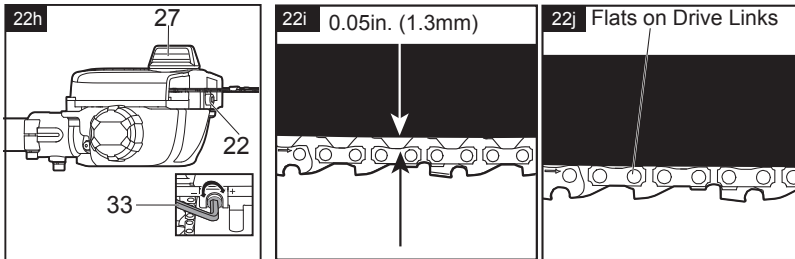
Adjusting the Chain Tension

1. Stop the saw, allow the saw to cool and remove the battery pack before adjusting the chain tension.
2. Loosen but do not remove the side-cover knob.
3. Rotate the chain tensioning screw (22) using the included hex key (33) to tension the chain. Rotate it clockwise to tighten (+) the chain and counterclockwise to loosen (-) the chain.

During normal saw operation, the temperature of the chain will increase. The drive links of a correctly tensioned warm chain will hang approximately 1.3 mm out of the bar groove (Fig. 22i).

A cold chain is correctly tensioned when there is no slack on the underside of the guide bar and the chain is snug, but it can be turned by hand without binding. The chain must be re-tensioned whenever the flats on the drive links do not sit in the bar groove (Fig. 22j).

NOTICE: New chains tend to stretch, check chain tension frequently and tension as required. A chain tensioned while it is warm may be too tight upon cooling. Check the cold tension before next use.



Chain Maintenance



WARNING! Remove the battery pack before performing any maintenance. Failure to heed this warning could result in serious personal injury.

Always wear gloves when handling the saw chain, these components are sharp and may contain burrs.

Use only low-kickback chain on this saw. This fast-cutting chain will provide kickback reduction when properly maintained.

A properly sharpened saw chain cuts through wood effortlessly, even with very little pressure. Never use a dull or damaged saw chain. A dull saw chain cutter leads to increased physical strain, increased vibration load, unsatisfactory cutting results and increased wear.

For smooth and fast cutting, the chain needs to be maintained properly. The chain requires sharpening when the wood chips are small and powdery, the chain must be forced through the wood during cutting, or the chain cuts to one side. During maintenance of your chain, consider the following:

Improper filing angle of the side plate can increase the risk of a severe kickback.

Raker (depth gauge) clearance. Too low increases the potential for kickback. Not low enough decreases cutting ability.

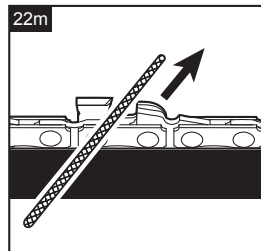
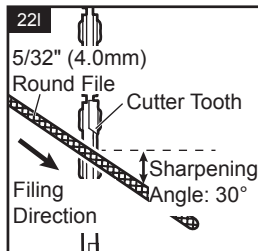
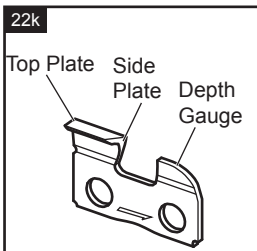
If cutter teeth have hit hard objects, such as nails and stones, or have been abraded by mud or sand on the wood, have the chain sharpened by a qualified service technician.

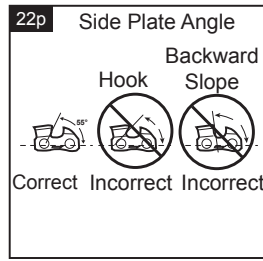
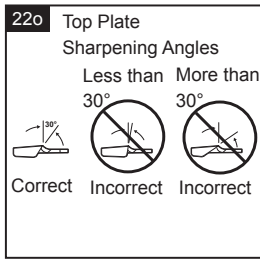
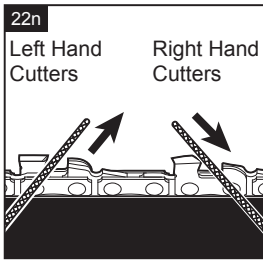
NOTICE: Inspect the drive sprocket for wear or damage when replacing the chain. If signs of wear or damage are present in the areas indicated, have the drive sprocket replaced by qualified service technician.

Sharpen the Cutters

Be careful to file all cutters (Fig. 22k) to the specified angles and to the same length, as fast cutting can be obtained only when all cutters are uniform.

- Remove the battery pack. Wear gloves for protection.
- Use a 5/32" (4.4 mm) diameter round file and holder (available separately). Do all of your filing at the middle position of the guide bar.
- Keep the file level with the top plate of the tooth. Do not let the file dip or rock.
- Keep a correct sharpening angle of 30° between the file and the saw chain; see Fig. 22l & 22m. Always use a file holder (available separately) when sharpening saw chains by hand. File holders have markings for the sharpening angle (Fig. 22l).
- Using light but firm pressure, stroke towards the front corner of the tooth. Lift the file away from the steel on each return stroke (Fig. 22m).
- Make a few firm strokes on every tooth. File all left hand cutters in one direction. Then move to the other side and file the right-hand cutters in the opposite direction. Occasionally remove filings from the file with a wire brush (Fig. 22n).





WARNING!

Improper chain sharpening increases the potential of kickback. Failure to replace or repair a damaged chain can cause serious injury.

Top-Plate Sharpening Angles (Fig. 22o)

CORRECT 30°- This optimal angle can be obtained only when the specified files and proper setting are used. File holders are marked with guide marks to align the file properly to produce the correct top plate angle.

LESS THAN 30°- The tooth is too dull for cutting.

MORE THAN 30°- The edge of the cutting tooth is feathered and dulls quickly.

Side Plate Angle (Fig. 22p)

CORRECT 55°- The optimal angle can be produced automatically if the correct diameter file is used in the file holder.

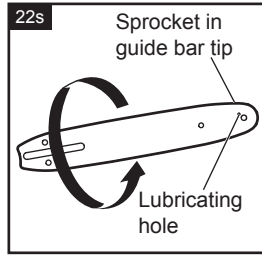
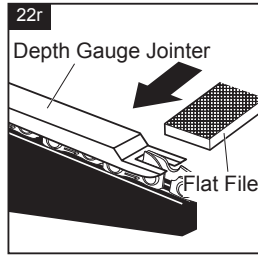
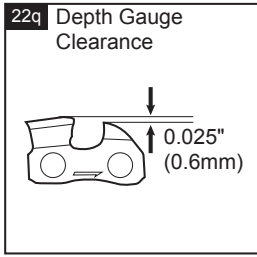
HOOK- “Grabs” and dulls quickly. Increases potential of KICKBACK. Results from using a file with a diameter that is too small, or a file held too low.

BACKWARD SLOPE- Needs too much feed pressure, causes excessive wear to bar and chain. Results from using a file with a diameter too large, or a file held too high.

Depth-Gauge Clearance

- The depth gauge should be maintained at a clearance of 0.025 in. (0.6 mm), as shown in Fig. 22q. Use a depth gauge tool (available separately) to check the depth-gauge clearances.
- Check the depth gauge clearance every time the chain is filed.
- Use a flat file and a depth-gauge jointer (both available separately) to lower all gauges uniformly (Fig. 22r). Use a 0.025 in. (0.6 mm) depth-gauge jointer.

Depth gauges must be adjusted with the flat file in the same direction that the adjoining cutter was filed with the round file. Use care not to contact the cutter face with the flat file when adjusting depth gauges.



Guide-Bar Maintenance

The bar should be cleaned every day of use and checked for wear and damage. Feathering or burring of the bar rails is a normal process of bar wear. Such faults should be smoothed with a file as soon as they occur. A bar with any of the following faults should be replaced.

- Wear inside the bar rails that permits the chain to lay over sideways.
- Bent guide bar.
- Cracked or broken rails.
- Spread rails.

Use a grease syringe to lubricate weekly with chain oil by means of the lubricating hole (Fig. 22s). Turn the guide bar and check that the lubrication holes and chain groove are free from impurities.

When the guide bar shows signs of wear, reverse it on the saw to distribute the wear for maximum bar life.

- a. Remove the guide bar and chain from the saw, following the section: "Replacing the Bar and Chain".
- b. Turn the guide bar over. The bottom of the bar will be on the top (Fig. 22s).
- c. Adjust the chain tension, following the section: "Adjusting the Chain Tension".

Spare parts / Replacement parts

The following parts of this product may be replaced by the consumer. Spare parts are available at an authorised dealer or through our customer service.

Description	Model no. or Specification
Trimmer head	Non-metallic(nylon),2.0mm
Brush cutter blade	Ø250 x Ø25.4 x 1.5mm, 3Teeth
Guide bar	Oregon 084BXNA041
Chain	Oregon 80TXL038X

Repair

This product does not contain any parts that can be repaired by the consumer. Contact an authorized service centre or a similarly qualified person to have it checked and repaired.

Storage

1. Clean the product as described above.
2. Store the product and its accessories in a dry, frost-free, well- ventilated place.
3. Always store the product in a place that is inaccessible to children. The ideal storage temperature is between 10 and 30°C.
4. We recommend using the suitable package for storage or covering the product with a suitable cloth or enclosure to protect it against dust.
5. Empty the tank if you are not going to use the product for an extended period of time (more than 3 months) and before storing it for the winter.
6. Securing the machine during transport to prevent loss of fuel, damage or injury.

Transportation

1. Switch the product off and remove the battery pack.
2. Attach transportation guards, if applicable.
3. Always carry the product on its handles.
4. Protect the product from any heavy impact or strong vibrations which may occur during transportation in vehicles.
5. Secure the product to prevent it from slipping or falling over.

Troubleshooting

Suspected malfunctions are often due to causes that the users can fix themselves. Therefore check the product using this section. In most cases the problem can be solved quickly.



WARNING! Only perform the steps described within these instructions! All further inspection, maintenance and repair work must be performed by an authorised service centre or a similarly qualified specialist if you cannot solve the problem yourself!

Problem	Possible cause	Solution
1. Product does not start	1.1. Battery pack is not properly attached	1.1. Attach properly
	1.2. Battery pack is discharged	1.2. Remove and charge battery pack
	1.3. Battery pack is damaged	1.3. Check by a specialist electrician
	1.4. Other electrical defect to the product	1.4. Check by a specialist electrician
2. Product does not reach full power	2.1. Battery pack capacity is too low	2.1. Charge battery pack
	2.2. Air vents are blocked	2.2. Clean the air vents
3. Unsatisfactory cutting performance	For grass trimmer:	
	3.1. Empty trimming spool / trimming line too short	3.1. Replace with a new one
	3.2. Grass too high	3.2. Cut in stages
	For brush cutter:	
	3.3. The motor is overloaded.	3.3. Remove the cutting head from the working area. and restart the tool. Let the tool do the work, do not force it.
	For pole hedge trimmer:	
	3.4. Too much friction due to lack of lubrication	3.4. Apply lubrication
	3.5. Cutting blade blunt	3.5. Contact your dealer
	For pole saw:	
	3.6. Chain tension too loose/high	3.6. Tension the saw chain properly
	3.7. Dull saw chain	3.7. Replace saw chain
3.8. Chain teeth are facing in the wrong direction	3.8. Reassemble the chain in correct direction	
3.9. Too much force applied	3.9. Reduce force	
3.10. No lubrication oil in the oil tank	3.10. Refill lubrication oil	
3.11. Oiling port clogged	3.11. Clean oiling port	
4. Product suddenly stops	4.1. Battery pack is discharged	4.1. Remove and charge battery pack
	4.2. Battery pack is too hot	4.2. Remove battery pack and let it cool down
	4.3. Cutting device is blocked	4.3. Remove blockage

Recycling and disposal



Waste electrical products should not be disposed of with household waste. Please recycle where facilities exist. Check with your Local Authority or local store for recycling advice.

For further information visit www.recycle-more.co.uk.

The product comes in a package that protects it against damage during shipping. Keep the package until you are sure that all parts have been delivered and the product is working properly. Recycle the package afterwards.

Disposal of an exhausted battery pack



The battery is Li-Ion type. To preserve natural resources, please recycle or dispose of the battery pack properly. Consult your local waste authority for information regarding available recycling and / or disposal options.

Discharge your battery pack by operating your tool, then remove the battery pack from the tool and cover the battery pack connections with heavy duty adhesive tape to prevent short circuit and energy discharge.

Do not attempt to open or remove any of the components.

EN Guarantee

At **Erbauer** we take special care to select high quality materials and use manufacturing techniques that allow us to create ranges of products incorporating design and durability.

We carry out stringent testing procedures on all our tools and are confident that they can provide regular, sustained daily use during the period covered.

This power tool is guaranteed for 3 years from the date of purchase, if bought in store, delivered or bought online. You may only make a claim under this guarantee upon presentation of your sales receipt or purchase invoice. Please keep your proof of purchase in a safe place.

This guarantee covers product failures and malfunctions provided the **Erbauer** power tool was used for the purpose for which it is intended and subject to installation, cleaning, care and maintenance in accordance with standard practice and with the information contained above and in the user manual. This guarantee does not cover defects and damage caused by or resulting from:

- Normal wear and tear
- Overload, misuse or neglect
- Repairs attempted by anyone other than an authorized agent
- Cosmetic damage
- Damage caused by foreign objects, substances or accidents
- Accidental damage or modification
- Failure to follow manufacturer's guidelines
- Loss of use of the goods

This guarantee is limited to parts recognised as defective. It does not, in any case, cover ancillary costs (movement, labour) and direct and indirect damage. If the **Erbauer** power tool is defective during the guarantee period, then we reserve the right, at our discretion, to replace the item with a product of equivalent quality and functionality or to provide a refund.

This guarantee only applies to the country of purchase or delivery and is not transferrable to any other countries. This guarantee is non-transferrable to any other person or product. Relevant local law will apply to this guarantee.

Guarantee related queries should be addressed to a store affiliated with the distributor from where you purchased the **Erbauer** power tool.

Erbauer battery and charger are guaranteed for 2 years and covered by all others terms within the above guarantee.

This guarantee is in addition to and does not affect your statutory rights relating to faulty goods as a consumer.

Manufacturer:

Kingfisher International Products Limited
1 Paddington Square, London, W2 1GG, United Kingdom www.kingfisher.com/products

Distributor:

B&Q plc
Chandlers Ford, Hants, SO53 3LE, United Kingdom
www.diy.com

Screwfix Direct Limited
Trade House, Mead Avenue, Yeovil, BA22 8RT, United Kingdom
www.screwfix.com

**IMPORTANT - RETAIN THIS
INFORMATION FOR FUTURE
REFERENCE: READ CAREFULLY**

EN Customer care and technical helpline

A better way to repair your tools

Kingfisher takes special care in creating high-quality garden power tools that are designed to last. But if a fault develops with your garden power tool and you need to claim under the guarantee, the Customer Care and Technical Helpline can support with technical assistance or if required, arrange a free courier collection from your home, assess your garden power tool for fault, repair it, and return it.

Deciding to repair your product rather than buying a replacement and adding to the mountain of waste is a more sustainable choice and you will be doing your bit for the environment.

How does it work?



NOTE: Before collection, all fuel must be removed from petrol powered machines.

Get in touch

If you need help or more information, please contact the Customer Care and Technical Helpline:

UK 0330 678 3077

ROI 1 800 365 800

Opening hours are Monday – Friday, 8am-5pm

Availability of spare parts

Contact the customer service helpline for assistance or visit www.kingfishersparses.com

For assistance contact the customer services helpline:

UK 0800 0789647 uk@kingfisherservice.com

EIRE 1800 932226 eire@kingfisherservice.com

Further information about this product can also be found at:

www.kingfisher.com/products



EN Declaration of conformity



(EN) EU DECLARATION OF CONFORMITY
(FR) DÉCLARATION UE DE CONFORMITÉ
(PL) DEKLARACJA ZGODNOŚCI UE
(RO) DECLARAȚIA DE CONFORMITATE UE
(ES) DECLARACIÓN UE DE CONFORMIDAD
(PT) DECLARAÇÃO DE CONFORMIDADE UE

Product/ Produit/ Produkt/Produsul/Producto/Produto

- Cordless Blower/ Souffleur Sans Fil/ Bezprzewodowa Dmuchawa Do Liści/ Suflantă Fără Fir/ Soplador Inalámbrico/Soprador De Folhas Sem Fios
- 82006.1/ERT1028GBL
- Serial number 00001-99999

Name and address of the manufacturer or his authorised representative:

Nom et adresse du fabricant ou de son mandataire:

Nazwa i adres producenta lub jego upoważnionego przedstawiciela:

Denumirea și adresa producătorului sau a reprezentantului său autorizat:

Nombre y dirección del fabricante o de su representante autorizado:

Nome e endereço do fabricante ou do respetivo mandatário:

Kingfisher International Products B.V.,
 Rapenburgstraat 15E,
 1017 VM Amsterdam,
 the Netherlands

This declaration of conformity is issued under the sole responsibility of the manufacturer.

La présente déclaration de conformité est établie sous la seule responsabilité du fabricant.

Niniejsza deklaracja zgodności wydana zostaje na wyłączną odpowiedzialność producenta.

Prezenta declarație de conformitate este emisă pe răspunderea exclusivă a producătorului.

La presente declaración de conformidad se expide bajo la exclusiva responsabilidad del fabricante.

A presente declaração de conformidade é emitida sob a exclusiva responsabilidade do fabricante.

Object of the declaration/Objet de la declaration/Przedmiot deklaracji/Obiectul declarației/Objeto de la declaración/Objeto da declaração

Product/ Produit/ Produkt/Produsul/ Producto/
 Produto

Cordless Blower/ Souffleur Sans Fil/
 Bezprzewodowa Dmuchawa Do Liści/ Suflantă Fără
 Fir/ Soplador Inalámbrico/Soprador De Folhas Sem
 Fios

Model/ Modèle/ Model/ Modelul/ Modelo/ Modelo

82006.1/ERT1028GBL

The object of the declaration described above is in conformity with the relevant Union harmonisation legislation:

L'objet de la déclaration décrit ci-dessus est conforme à la législation d'harmonisation de l'Union applicable:

Wymieniony powyżej przedmiot niniejszej deklaracji jest zgodny z odpowiednimi wymaganiami unijnego prawodawstwa harmonizacyjnego:

Obiectul declarației descris mai sus este în conformitate cu legislația relevantă de armonizare a Uniunii:

El objeto de la declaración descrita anteriormente es conforme con la legislación de armonización pertinente de la Unión:

O objeto da declaração acima descrito está em conformidade com a legislação de harmonização da União aplicável:

<p>2006/42/EC as amended Machinery Directive 2014/30/EU as amended Directive Electromagnetic compatibility 2000/14/EC as amended Outdoor Noise Directive 2011/65/EU as amended Directive Restriction of the use of certain hazardous substances in electrical and electronic equipment Directive 2006/42/CE relative aux machines 2014/30 / UE telle que modifiée Directive Compatibilité électromagnétique Directive 2000/14/CE relative aux émissions sonores extérieures Directive 2011/65/UE relative à la limitation de l'utilisation de certaines substances dangereuses dans les équipements électriques et électroniques 2006/42/WE w zmienionej dyrektywie maszynowej 2014/30 / UE ze zmianami Dyrektywa Kompatybilność elektromagnetyczna 2000/14/WE w zmienionej dyrektywie w sprawie hałasu na zewnątrz 2011/65 / UE ze zmianami Dyrektywa Ograniczenie stosowania niektórych niebezpiecznych substancji w sprzęcie elektrycznym i elektronicznym 2006/42/CE, astfel a fost modificată Directiva privind echipamentele 2014/30/UE, astfel a fost modificată Directiva privind compatibilitatea electromagnetică 2000/14/CE, astfel a fost modificată Directiva privind zgomotul în aer liber 2011/65/UE, astfel a fost modificată Directiva privind limitarea utilizării anumitor substanțe periculoase în echipamentele electrice și electronice Directiva sobre maquinaria modificada 2006/42/CE 2014/30/UE modificada Directiva Compatibilidad electromagnética 2000/14/CE modificada Directiva sobre ruido al aire libre 2011/65/UE modificada Directiva Restricción del uso de determinadas sustancias peligrosas en equipos eléctricos y electrónicos 2006/42/CE como diretiva de maquinas alteradas 2014/30/UE como alteração da compatibilidade eletromagnética 2000/14/CE como diretiva de ruído exterior liberada 2011/65/UE como restrição de diretiva alterada a utilização de certas substâncias perigosas em equipamentos elétricos e eletrônicos</p>	<p>2006/42/EC as amended Machinery Directive 2014/30/EU as amended Directive Electromagnetic compatibility 2000/14/EC as amended Outdoor Noise Directive 2011/65/EU as amended Directive Restriction of the use of certain hazardous substances in electrical and electronic equipment Directive 2006/42/CE relative aux machines 2014/30 / UE telle que modifiée Directive Compatibilité électromagnétique Directive 2000/14/CE relative aux émissions sonores extérieures Directive 2011/65/UE relative à la limitation de l'utilisation de certaines substances dangereuses dans les équipements électriques et électroniques 2006/42/WE w zmienionej dyrektywie maszynowej 2014/30 / UE ze zmianami Dyrektywa Kompatybilność elektromagnetyczna 2000/14/WE w zmienionej dyrektywie w sprawie hałasu na zewnątrz 2011/65 / UE ze zmianami Dyrektywa Ograniczenie stosowania niektórych niebezpiecznych substancji w sprzęcie elektrycznym i elektronicznym 2006/42/CE, astfel a fost modificată Directiva privind echipamentele 2014/30/UE, astfel a fost modificată Directiva privind compatibilitatea electromagnetică 2000/14/CE, astfel a fost modificată Directiva privind zgomotul în aer liber 2011/65/UE, astfel a fost modificată Directiva privind limitarea utilizării anumitor substanțe periculoase în echipamentele electrice și electronice Directiva sobre maquinaria modificada 2006/42/CE 2014/30/UE modificada Directiva Compatibilidad electromagnética 2000/14/CE modificada Directiva sobre ruido al aire libre 2011/65/UE modificada Directiva Restricción del uso de determinadas sustancias peligrosas en equipos eléctricos y electrónicos 2006/42/CE como diretiva de maquinas alteradas 2014/30/UE como alteração da compatibilidade eletromagnética 2000/14/CE como diretiva de ruído exterior liberada 2011/65/UE como restrição de diretiva alterada a utilização de certas substâncias perigosas em equipamentos elétricos e eletrônicos</p>
<p>Measured Sound Power Level Le niveau de puissance acoustique mesuré Zmierzony poziom mocy akustycznej Nivel de putere acustică măsurat Nível de potencia sonora medido Nível de potência sonora medido : 95 dB(A)</p>	<p>Guaranteed Sound Power Level Le niveau de puissance acoustique garant Gwarantowany poziom mocy akustycznej Nivel de putere acustică garantat Nível de potencia sonora garantizado Nível de potência sonora garantido : 96 dB(A)</p>
<p>References to the relevant harmonised standards used or references to the other technical specifications in relation to which conformity is declared: Références des normes harmonisées pertinentes appliquées, y compris la date de celles-ci, ou des autres spécifications techniques, y compris la date de celles-ci, par rapport auxquelles la conformité est déclarée: Odwolania do odnośnych norm zharmonizowanych, które zastosowano, wraz z datą normy, lub do innych specyfikacji technicznych, wraz z datą specyfikacji, w odniesieniu do których deklarowana jest zgodność: Trimiteri la standardele armonizate relevante folosite, inclusiv data standardului, sau trimeri la celelalte specificații tehnice, inclusiv data specificațiilor, în legătură cu care se declară conformitatea: Referencias a las normas armonizadas pertinentes utilizadas, incluidas las fechas de las normas, o referencias a las otras especificaciones técnicas, incluidas las fechas de las especificaciones, respecto a las cuales se declara la conformidad: Referências às normas harmonizadas aplicáveis utilizadas, incluindo a data da norma, ou às outras especificações técnicas, incluindo a data da especificação, em relação às quais é declarada a conformidade:</p>	

EN 62841-1:2015+A11:2022
EN 15503:2009+A1:2013+A2:2015
EN IEC 55014-1:2021
EN IEC 55014-2:2021

Authorised signatory and technical file holder/signataire et responsable de la documentation technique
autorisé/ podmiot uprawniony do wystawienia i adres prezechowywania dokumentacji technicznej/
semnatar autorizat și deținător al dosarului tehnic/firmante autorizado y titular del expediente tecnico/
signatário autorizado e detentor do arquivo técnico

Kingfisher International Products B.V.,
Rapenburgerstraat 175E,
1011 VM Amsterdam,
The Netherlands

FPO



David Awe
Group Quality Director

30/07/2024



(UK) DECLARATION OF CONFORMITY

Product

- Cordless Blower
- 82006.1/ERT1028GBL
- Serial number 00001-99999

Name and address of the manufacturer or his authorised representative:

Kingfisher International Products Limited
1 Paddington Square
London
W2 1GG
United Kingdom

This declaration of conformity is issued under the sole responsibility of the manufacturer.

Object of the declaration

Product

Cordless Blower

Model

82006.1/ERT1028GBL

The object of the declaration described above is in conformity with the following legislation:

2006/42/EC as amended Machinery Directive
2014/30/EU as amended Directive Electromagnetic compatibility
2000/14/EC as amended Ozone Directive
2011/65/EU as amended Directive Restriction of the use of certain hazardous substances in electrical and electronic equipment
Measured Sound Power Level: 95 dB(A)
Guaranteed Sound Power Level: 96 dB(A)

References to the relevant designated standards used or references to the other technical specifications in relation to which conformity is declared:

EN 62841-1:2015+A11:2022

EN 15503:2009+A1:2013+A2:2015

BS EN 62841-1:2015+A11:2022

BS EN 15503:2009+A1:2013+A2:2015

EN IEC 55014-1:2021

EN IEC 55014-2:2021

BS EN IEC 55014-1:2021

BS EN IEC 55014-2:2021

Authorised signatory and technical file holder:

Kingfisher International Products Limited
1 Paddington Square
London
W2 1GG
United Kingdom

David Awe
Group Quality Director

On: 30/07/2024